



EAST ELEVATION- BUILDING A

A3-1:200



EAST ELEVATION- BUILDING B

A3-1:200

C
CHANGE GREY BRICK TO RED BRICK

MATERIAL SCHEDULE

J ACOUSTIC BARRIER

A RED FACE BRICK OR SIMILAR

B RENDER WITH SCORE PATTERN OR SIMILAR

C GLASS WINDOW WITH OFF WHITE HOOD OR SIMILAR

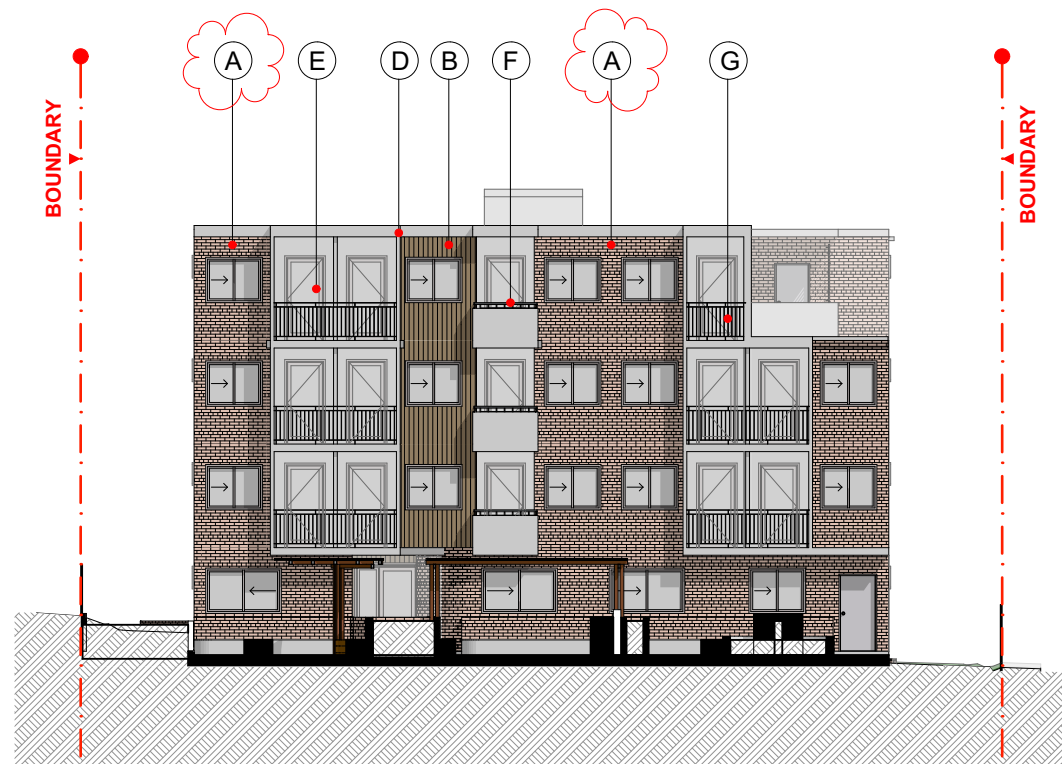
D OFF-WHITE RENDER OR SIMILAR

E ALUMINIUM FRAME SLIDING DOORS AND WINDOWS WITH DOUBLE GLAZED PILKINGTON LOW "E" GLASS OR SIMILAR

F CONCRETE BALUSTRADE WITH RAILING OR SIMILAR

G STEEL BALUSTRADE

H TIMBER SLAT PRIVACY FENCING OR SIMILAR



WEST ELEVATION- BUILDING A

A3-1:200



WEST ELEVATION- BUILDING B

A3-1:200

SCALE 1:200 @ A3
0 1 2 5 10M

FOR DA PURPOSES ONLY NOT FOR CONSTRUCTION DA	Drawing Original Size A3	DO NOT SCALE DWGS. USE DIMENSIONS ONLY. REFER ANY DISCREPANCIES TO ARCHITECT PRIOR TO CONSTRUCTION. THESE DRAWINGS ARE SUBJECT TO COPYRIGHT.	ACOUSTIC - ISSUE A KOIKAS ACOUSTIC 631-463 Forest Road, Beverly NSW 2201 0457 5702 office@koikasacoustic.com aleksa@koikasacoustic.com	BCA & ACCESS DESIGN RC PO Box 2331, North Parramatta 1750 0455 556 578 aleksa@designrc.com.au	HYDRAULIC & LANDSCAPE - ISSUE A SITE PLUS PTY LTD PO Box 1150, North Parramatta NSW 2066 0420 3361 geo-environmental@siteplus.net.au	LANDSCAPING CONCEPT LANDSCAPE ARCHITECTS 5/101 Miller St, Cammeray NSW 2062 0422 5312 rob@concept.net.au	GEOTECHNICAL geo-environmental 5/101 Miller St, Cammeray NSW 2066 0420 3361 geo-environmental@siteplus.net.au	PLANNING NEXUS ENVIRONMENTAL PLANNING T: (02) 9736 1313 E: karene@nexusplanning.com.au 0422 5312 nexusplanning@nexusplanning.com.au	ARCHITECT GHAZI AL ALI ARCHITECT NSW reg. no. 7542 T: +612 9744 7035 E: office@ghazi.com ABN: 67167131848 The Carlton Factory Suite 21 / 47-55 John St, Leichhardt NSW 2040	PROJECT 85-87 Anzac Avenue West Ryde NSW	DRAWING NAME MATERIAL SCHEDULE 02	PROJECT NUMBER P21-001
										CLIENT CROSSING PACIFIC PTY LTD	SCALE 1:200, 1:100	
			ACOUSTIC RWDI Australia Pty Ltd 5002, LE 80 William St, Woolloomooloo NSW 2011 0437 4611 Neil.Greaves@rwdi.com	BASIX GRADWELL CONSULTING PO Box 819, Berala NSW 2017 0408 964 139 david@gradwellconsulting.com	HYDRAULIC SITE PLUS PTY LTD PO Box 1150, North Parramatta NSW 2137 0404 142 063 info@siteplus.com	WASTE MANAGEMENT LOKA CONSULTING ENGINEERS PO Box 3110, North Sydney NSW 2137 0412 541 657 info@loka.com	QUANTITY SURVEY MMDDC Suite 5/101 George St, Parramatta NSW 0412 541 657 michael@mmddc.com.au	CONSTRUCTION CONSTRUCTION CONSULTANTS T: +612 9744 7035 E: office@ghazi.com ABN: 67167131848 The Carlton Factory Suite 21 / 47-55 John St, Leichhardt NSW 2040	CHECKED LL	PROJECT ARCHITECT GAA	DRAWING NUMBER DA	ISSUE A-2202